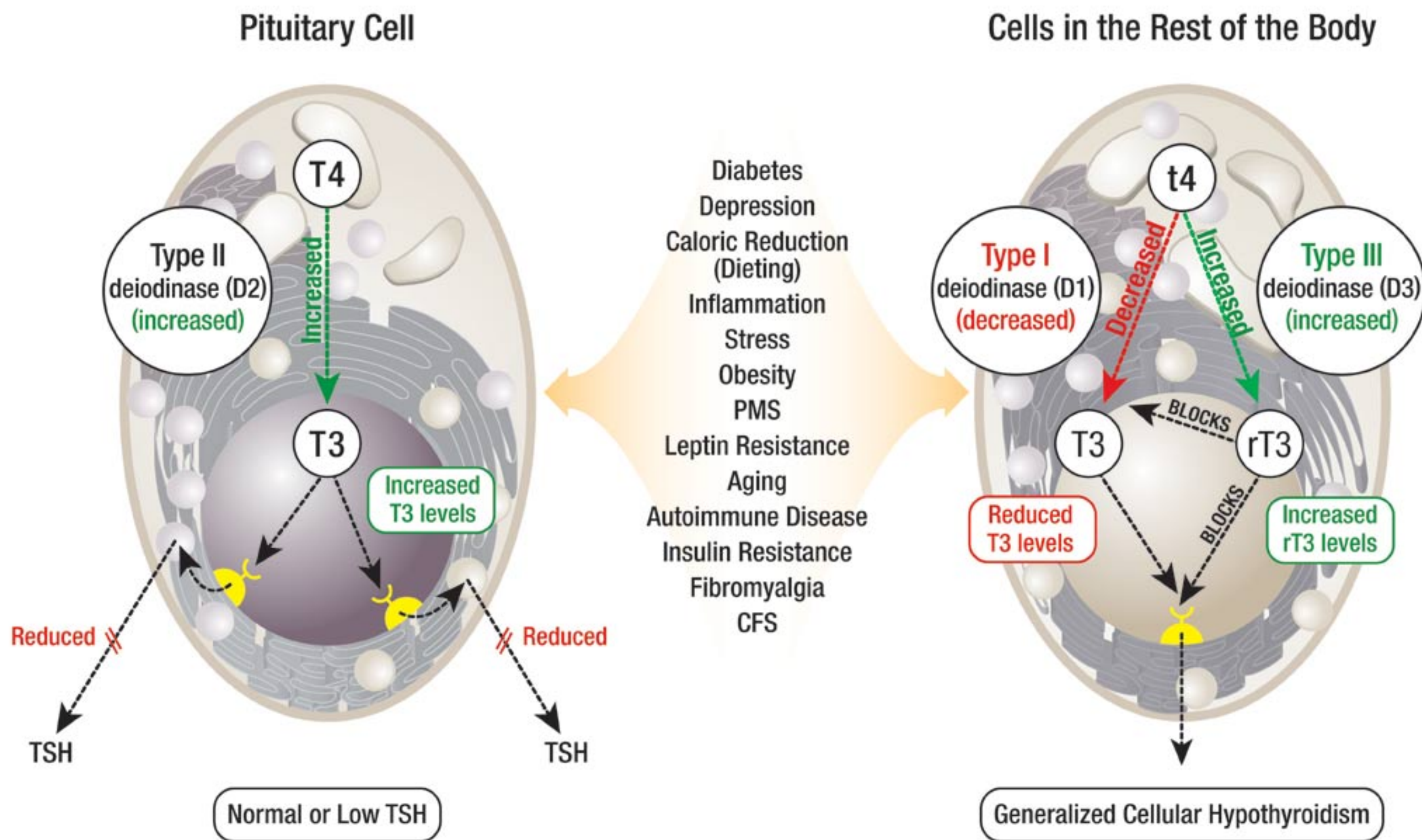


Conditions that cause low cellular T3 (hypothyroidism) not detected by TSH levels



Condition: TSH decreased (TSH fails to demonstrate hypothyroidism with normal TSH)

Cause: Increased T4 to T3 conversion in pituitary by D2 results in increased pituitary T3 levels and a decrease in TSH levels (no reverse T3 is produced in pituitary).

Condition: Cellular Hypothyroidism & worsening of symptoms/condition

Cause: Decreased T4 to T3 conversion by D1 results in decreased T3 levels in the rest of the body and symptoms of hypothyroidism due to low intracellular T3 levels (Increased T4 to rT3 by D3 further blocks T4 to T3 conversion and the T3 receptor, causing further hypothyroid symptoms).